



University of  
**Nottingham**

UK | CHINA | MALAYSIA

## Care Homes and COVID-19: some points for consideration

Adam Gordon,  
Professor of the Care of Older People  
University of Nottingham, UK



@adamgordon1978

# Conflicts of Interest

I have been a member of the SAGE Social Care Working Group since  
August 2020

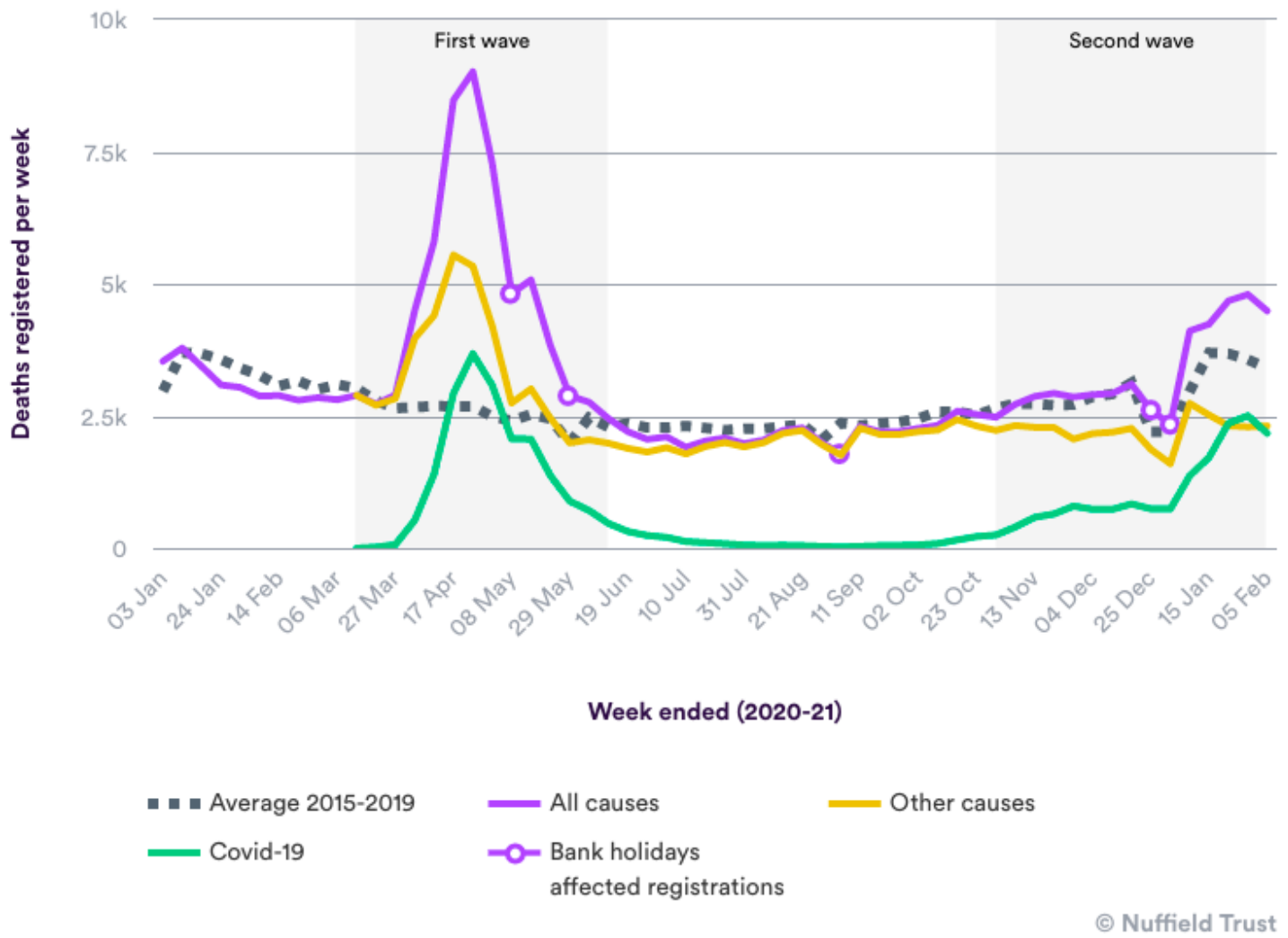
I am President Elect of the British Geriatrics Society

**- I am not speaking on behalf of either organization this evening -**

# Care Homes in England and Wales

Between 28<sup>th</sup> December 2019 and 12<sup>th</sup> June 2020:

- 29,393 excess deaths were reported for the care home sector.
- 19,394 of these were directly attributable to COVID-19.
- 47% of all deaths attributable to COVID-19 were in care homes.

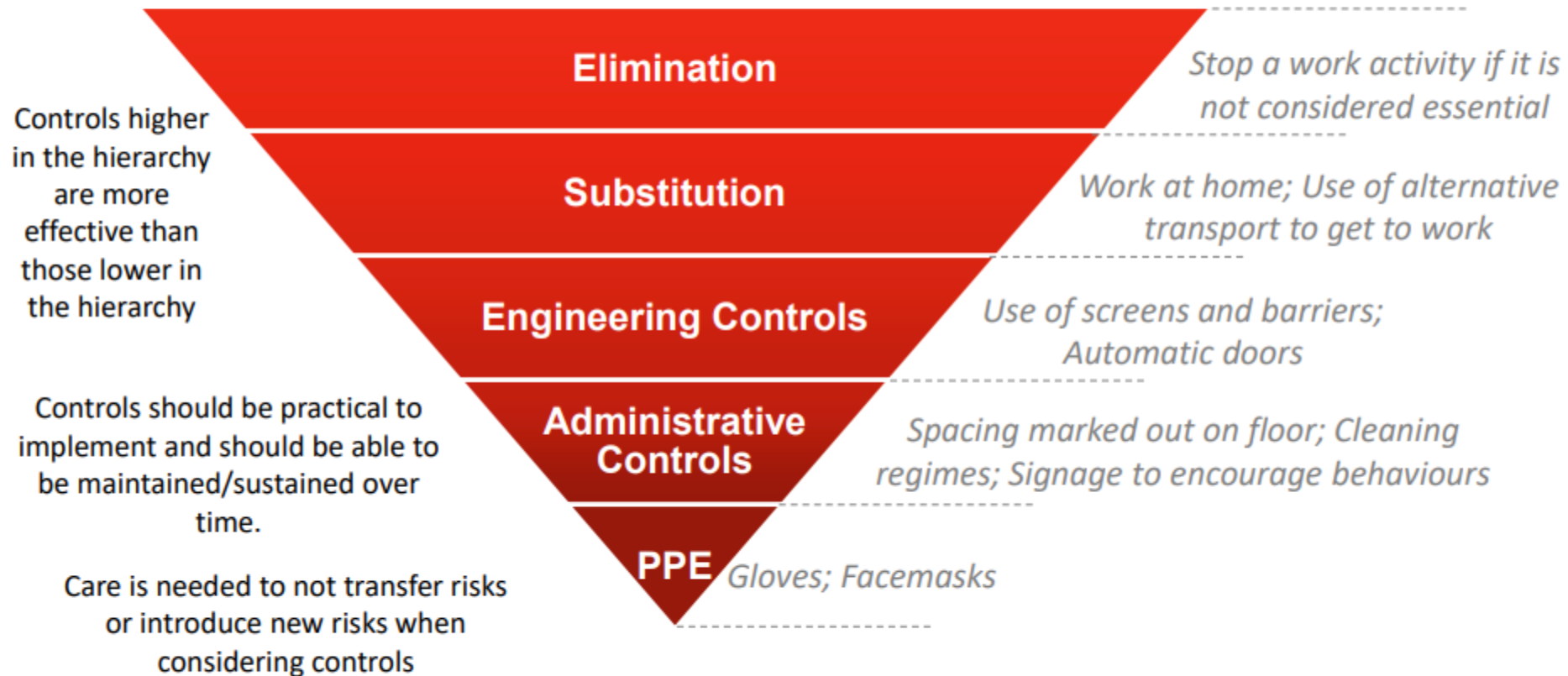


Source: Nuffield Trust analysis of ONS data.

<https://www.nuffieldtrust.org.uk/news-item/covid-19-and-the-deaths-of-care-home-residents>



# Hierarchy of controls



The use of multiple different independent controls can give defence in depth through different layers of protection

## Coronavirus: vulnerable people may die alone due to impact on UK home care

**Financial pressures including cost of PPE could lead to closure of many firms, say carer groups**

- [Coronavirus - latest updates](#)
- [See all our coronavirus coverage](#)

Gill Heppell, the founder of the Nottingham-based home care provider PerCurra, said the cost of PPE was exorbitant while supply was short.

“Masks now cost £11.95 each - and you have to buy 1,000. I am never going to need 1,000, and I hope I won’t need them at all,” she said. “We usually buy two five-litre tubs of hand sanitiser for £30. One tub now costs £100. Gloves usually cost £1.90 for 100. Now they are £20.

Research article | [Open Access](#) | Published: 05 February 2021

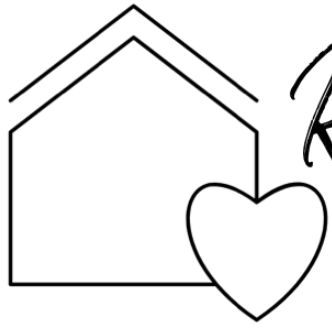
# Care homes, their communities, and resilience in the face of the COVID-19 pandemic: interim findings from a qualitative study

[Fiona Marshall](#) , [Adam Gordon](#), [John R. F. Gladman](#) & [Simon Bishop](#)

*BMC Geriatrics* **21**, Article number: 102 (2021) | [Cite this article](#)

**1795** Accesses | **34** Altmetric | [Metrics](#)

<https://bmcgeriatr.biomedcentral.com/articles/10.1186/s12877-021-02053-9>



# Rights For Residents

## Care homes 'could soon reopen to visitors' before residents have second shot of Covid vaccine

Health minister hints that elderly could welcome family members sooner than target for all residents to have second dose in 12 weeks' time

By Lucy Fisher, DEPUTY POLITICAL EDITOR

1 February 2021 • 10:54pm





## COMMENTARY

# The COVID rehabilitation paradox: why we need to protect and develop geriatric rehabilitation services in the face of the pandemic

STEFAN GRUND<sup>1</sup>, ADAM L. GORDON<sup>2,3</sup>, JÜRGEN M. BAUER<sup>1</sup>, WILCO P. ACHTERBERG<sup>4</sup>, JOS M. G. A. SCHOLS<sup>5</sup>

<sup>1</sup>Center for Geriatric Medicine, Heidelberg University, Agaplesion Bethanien Krankenhaus Heidelberg, Germany

<sup>2</sup>Division of Medical Sciences and Graduate Entry Medicine, Derby Medical School, Royal Derby Hospital, University of Nottingham, Derby DE22 3NE, UK

<sup>3</sup>NIHR Applied Research Collaboration-East Midlands, Nottingham, UK

<sup>4</sup>Department of Public Health and Primary Care, Leiden University Medical Center, 2300 Leiden, The Netherlands

<sup>5</sup>Department of Health Services Research, Focusing on Value-based Care and Ageing and Department of Family Medicine, Caphri - Care and Public Health Research Institute, Maastricht University, 6200 Maastricht, The Netherlands

Address correspondence to: Stefan Grund. Tel: 004962213191730; Fax: 004962213191513.

Email: stefan.grund@bethanien-heidelberg.de

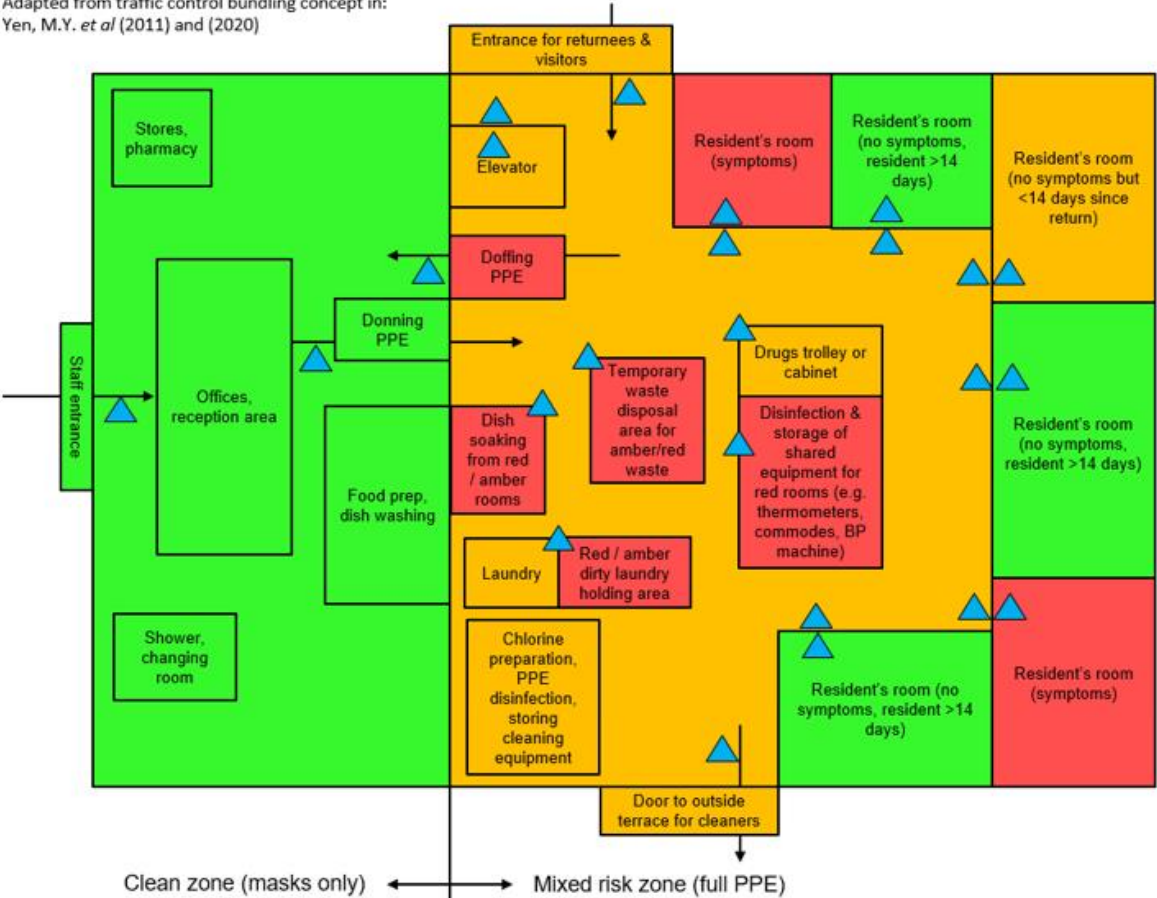
---

<https://academic.oup.com/ageing/article/50/3/605/6097010>

## Delineation of risk zones - adapted for care homes

▲ Hand hygiene

Adapted from traffic control bundling concept in:  
Yen, M.Y. *et al* (2011) and (2020)





Guidance

# Care home LFD testing of visitors guidance

Updated 15 December 2020



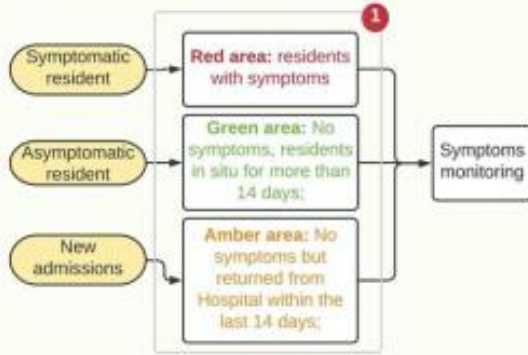


1/2 days

3 days

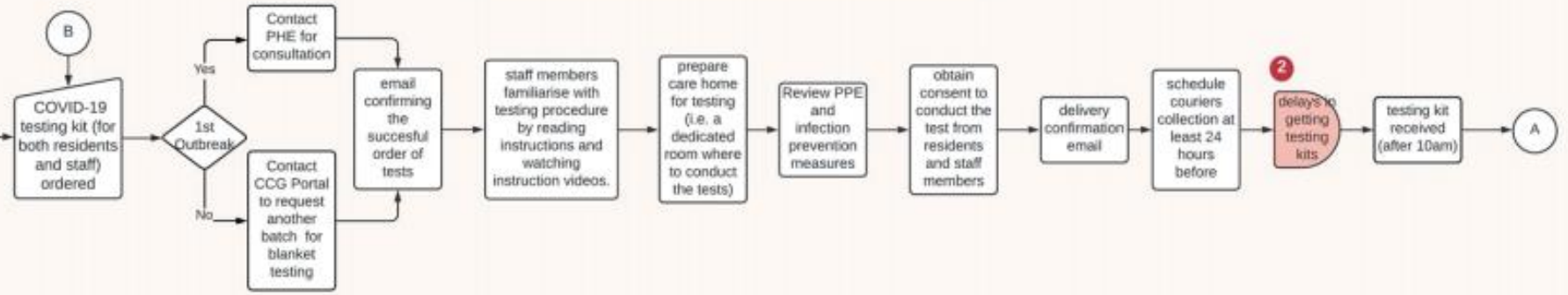
## 1. INFECTION PREVENTION

(precautions taken to prevent the virus spreading)



## 2. PREPARATORY STEPS

(tasks required to ready the care home and residents for testing)

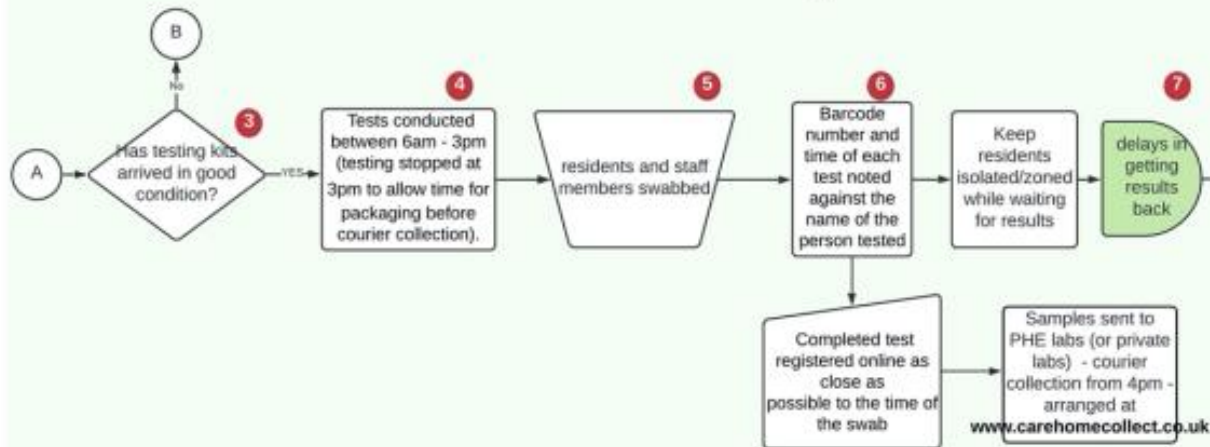


1/2 days

up to 3 days

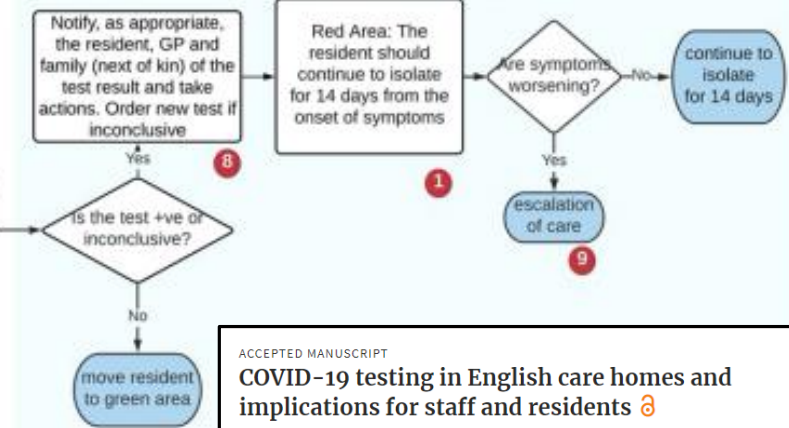
## 3. SWABBING PROCEDURE

(tasks required to collect a specimen from a resident and process it ready for transfer to a laboratory)



## 4. MANAGEMENT of RESIDENTS

(making decisions about what to do whilst waiting upon, and after receiving, results)



ACCEPTED MANUSCRIPT

### COVID-19 testing in English care homes and implications for staff and residents

Massimo Micocci, Adam L Gordon, A Joy Allen, Timothy Hicks, Patrick Kierkegaard, Anna McLister, Simon Walne, Peter Buckle on behalf of the CONDOR study team

Age and Ageing, afab015, <https://doi.org/10.1093/ageing/afab015>

Published: 22 January 2021

# Enhanced Lateral Flow Testing Strategies in Care Homes Are Associated with Poor Adherence and Were Insufficient to Prevent COVID-19 Outbreaks: Results from a Mixed Methods Implementation Study

22 Pages • Posted: 13 Apr 2021

11 care homes; 1638 test results from 407 staff

- 8.6% of staff achieved >75% protocol adherence
- 25.3% achieved 50% protocol adherence

[https://papers.ssrn.com/sol3/papers.cfm?abstract\\_id=3822257](https://papers.ssrn.com/sol3/papers.cfm?abstract_id=3822257)



# Coronavirus: Rapid tests in care homes a 'game-changer'

By Alison Holt  
Social Affairs Correspondent, BBC News

12 November

Coronavirus pandemic



Staff have been trained to analyse Covid tests in care homes as part of a trial

[Comment on this paper](#)

## Is Point-of-Care testing feasible and safe in care homes in England? An exploratory usability and accuracy evaluation of Point-of-Care Polymerase Chain Reaction test for SARS-COV-2

Massimo Micocci, Adam L Gordon, Mikyung Kelly Seo, A. Joy Allen, Kerrie Davies, Dan Lasserson, Carl Thompson, Karen Spilsbury, Cyd Akkrill, Ros Heath, Anita Astle, Claire Sharpe, Rafael Perrera, Peter Buckle

doi: <https://doi.org/10.1101/2020.11.30.20240010>

<https://www.medrxiv.org/content/10.1101/2020.11.30.20240010v1>

# Conclusions

The measures in place for care homes improved substantially between wave 1 and wave 2.

There are now legitimate areas of uncertainty about how to keep the hierarchies of control in place ahead of a possible third wave.

The devastation of the first wave shows the potential perils if these are not approached with caution.